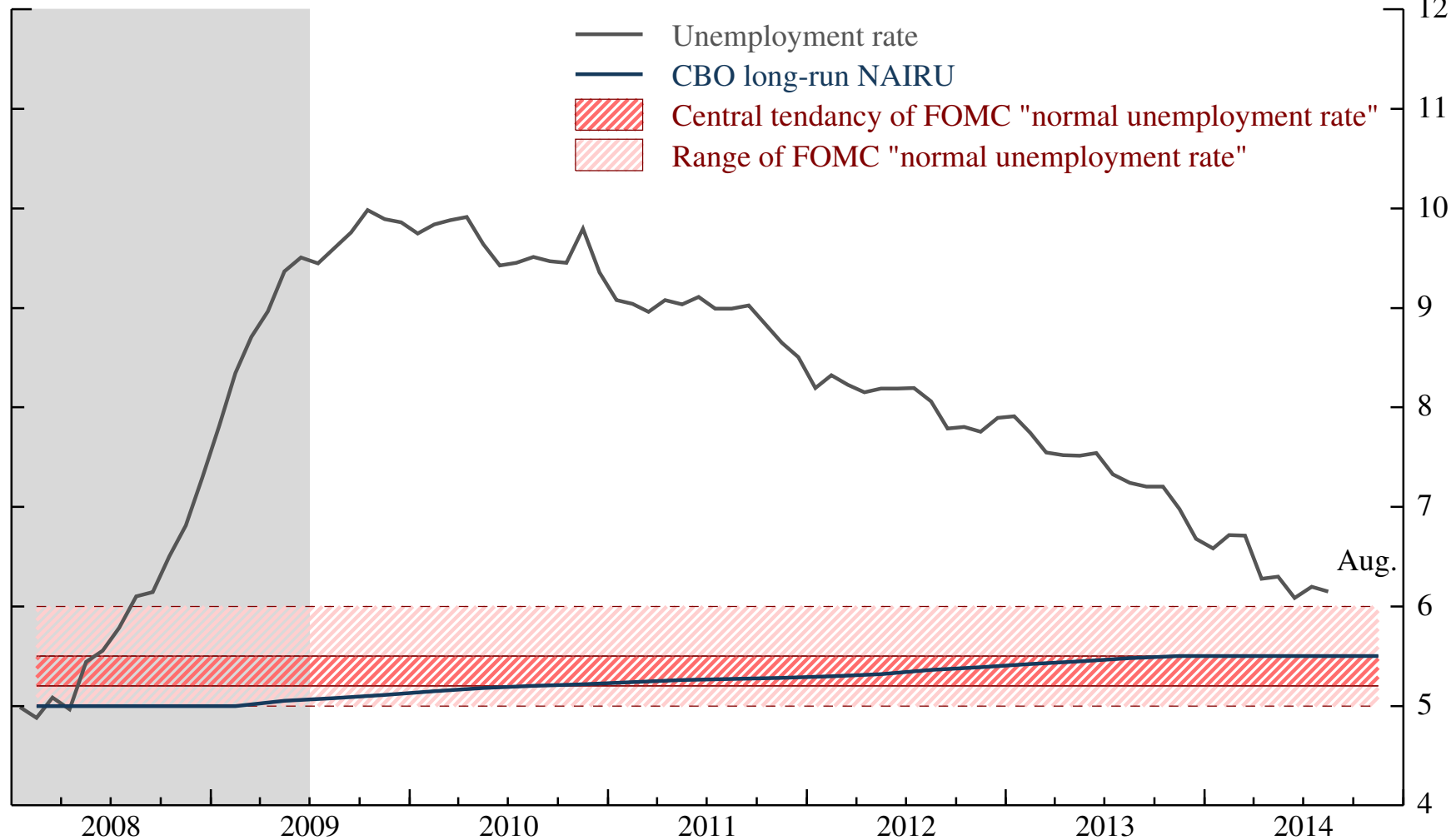
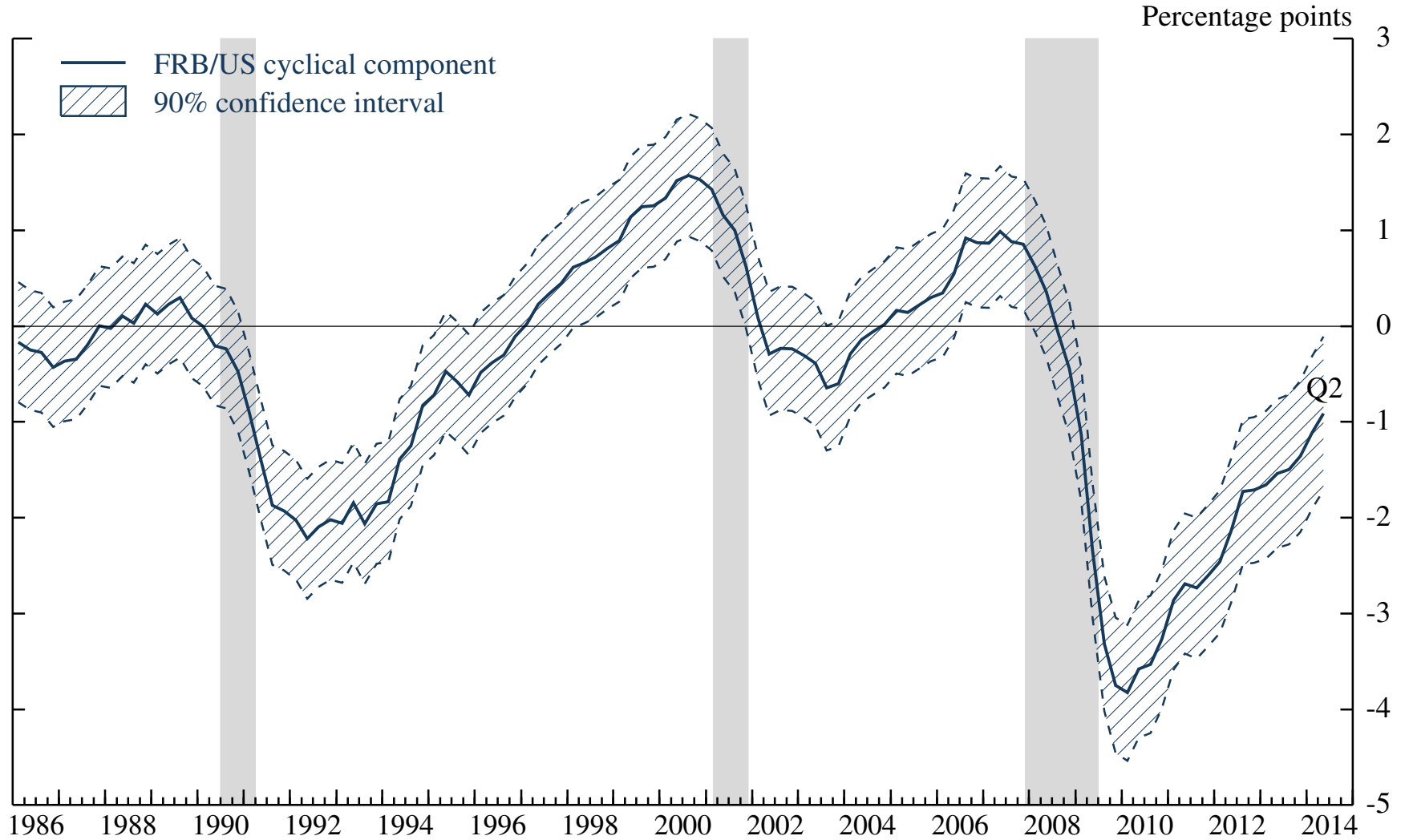


Unemployment Rate

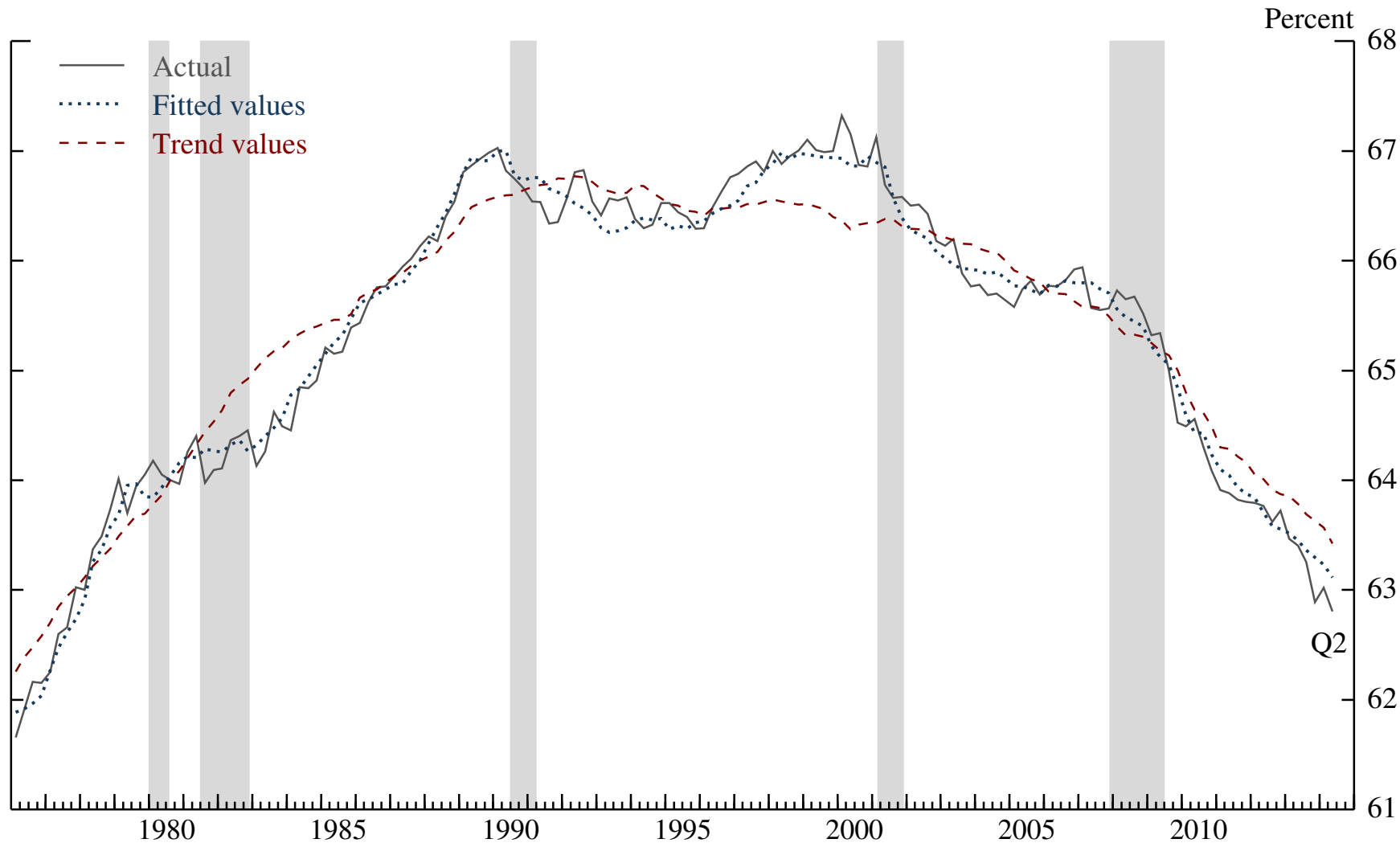
Percent of labor force



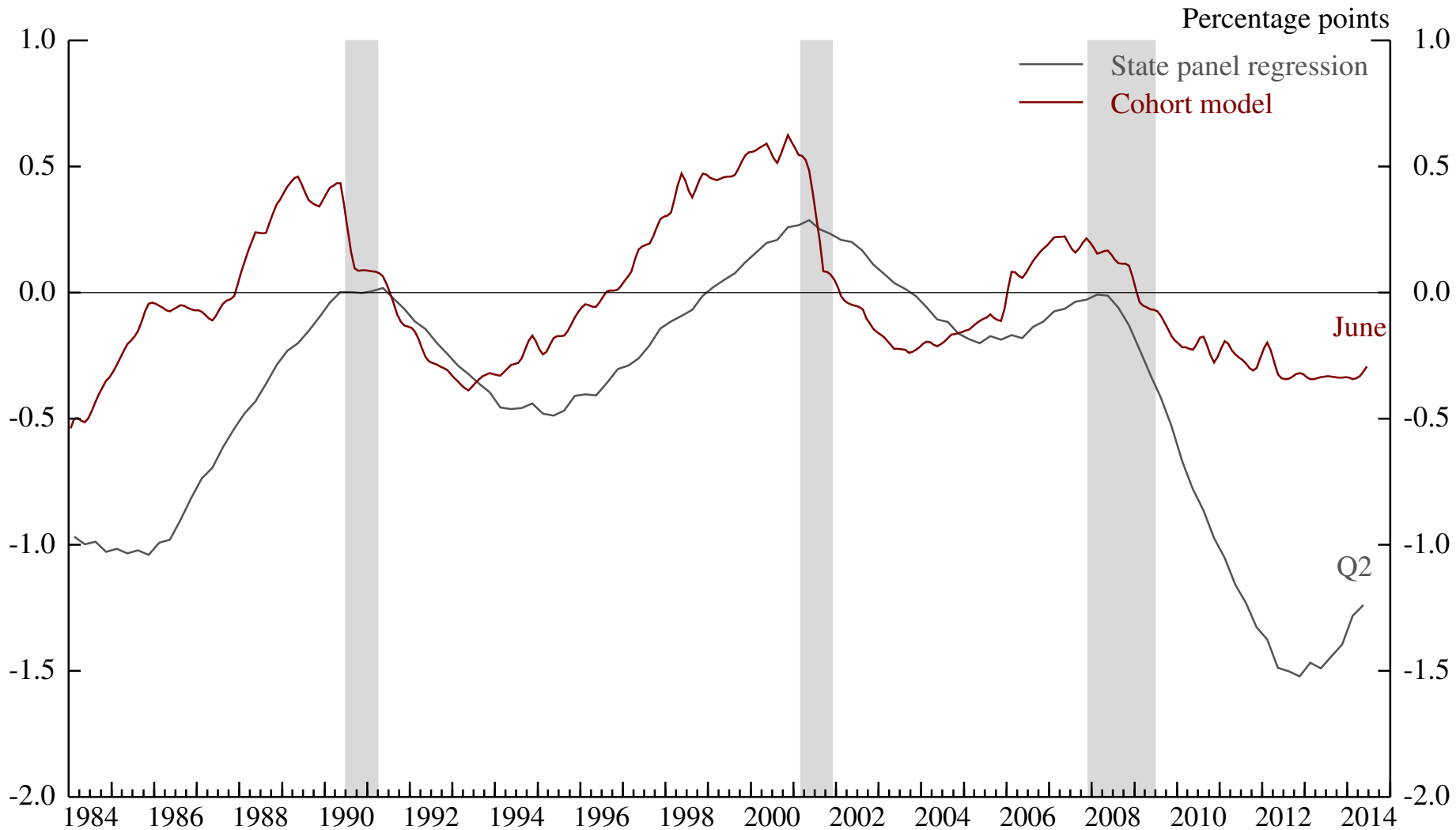
FRB/US Estimate of Slack



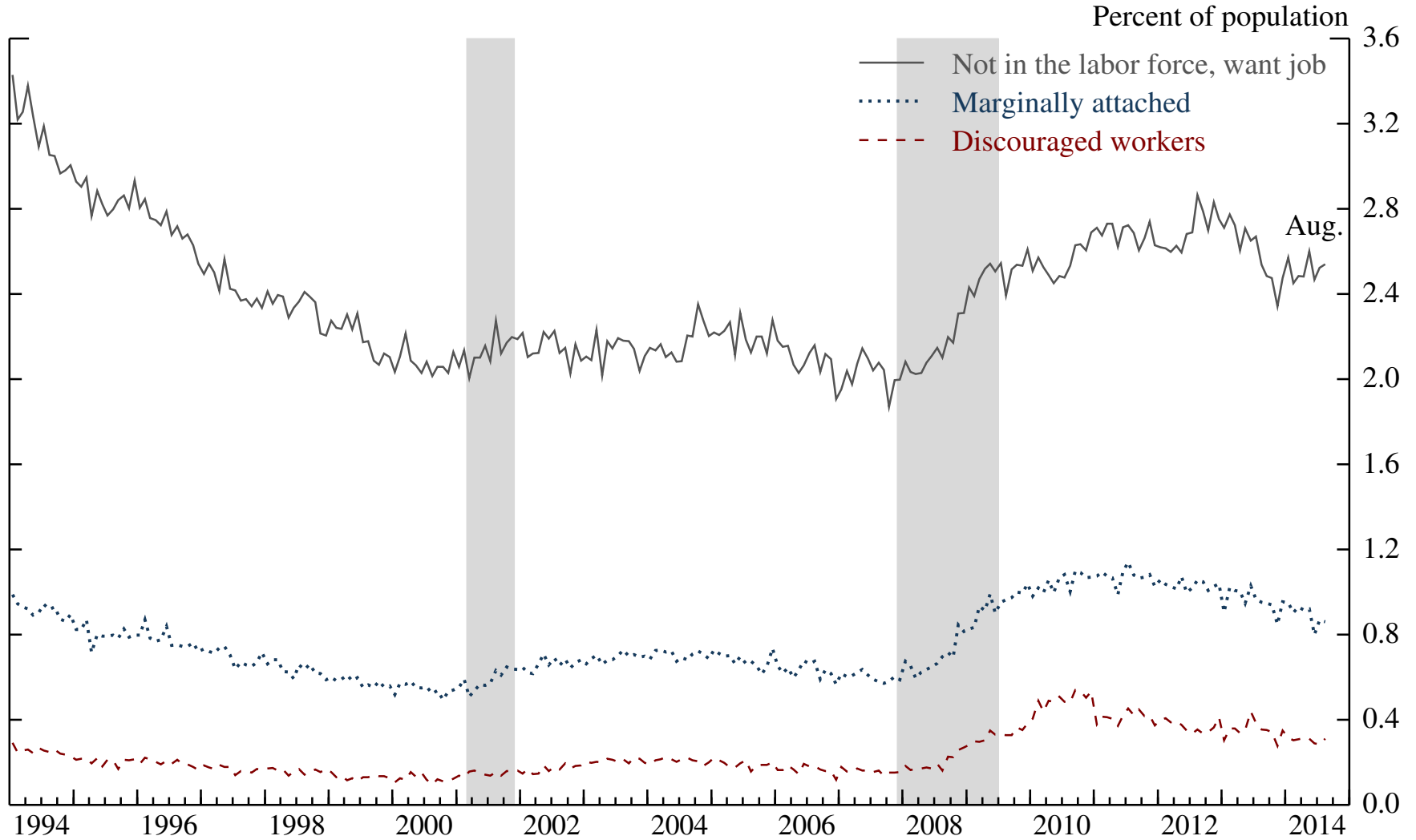
Labor Force Participation Rate



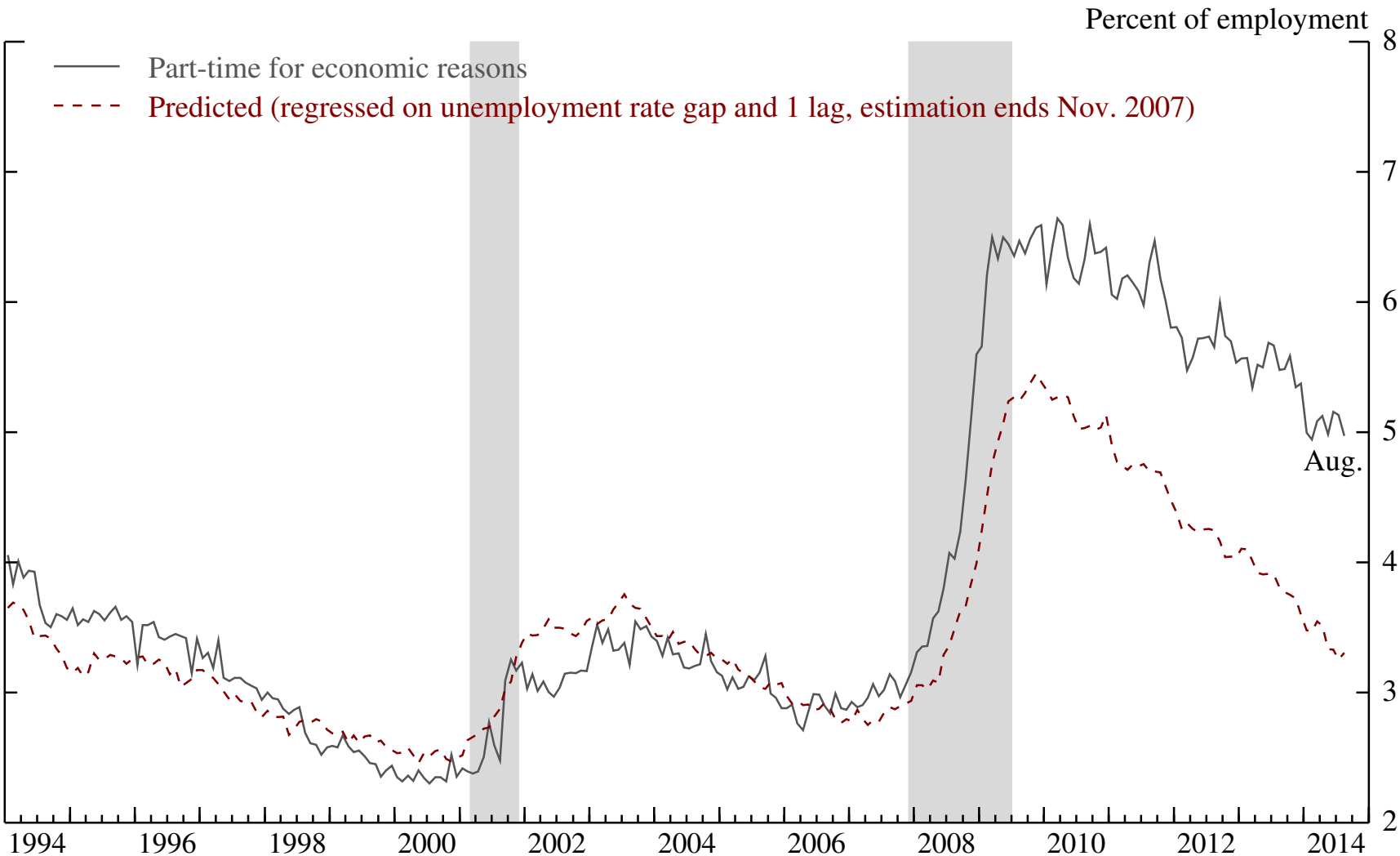
Estimates of LFPR Cyclical Effects



Measures of Discouragement



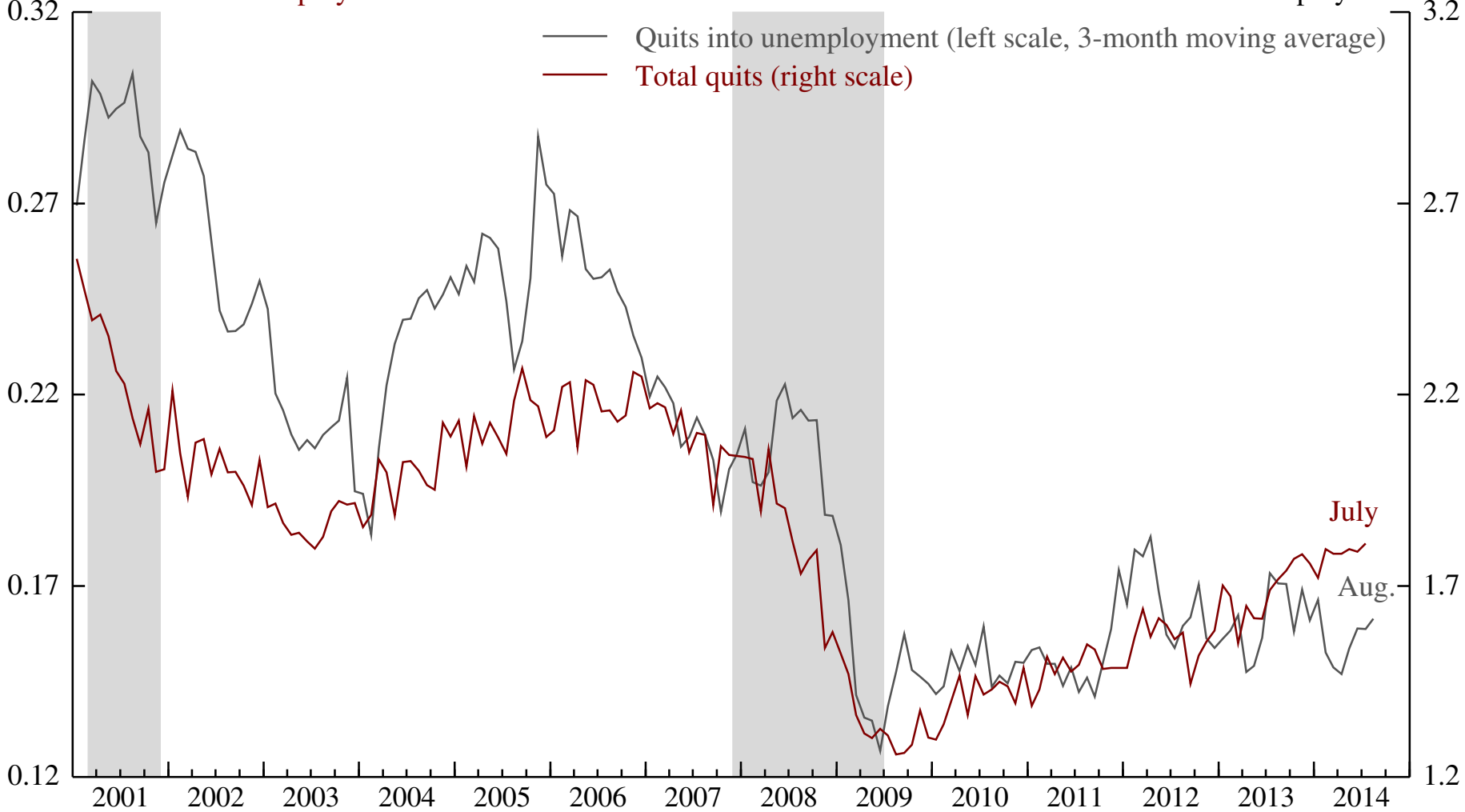
Part-Time for Economic Reasons



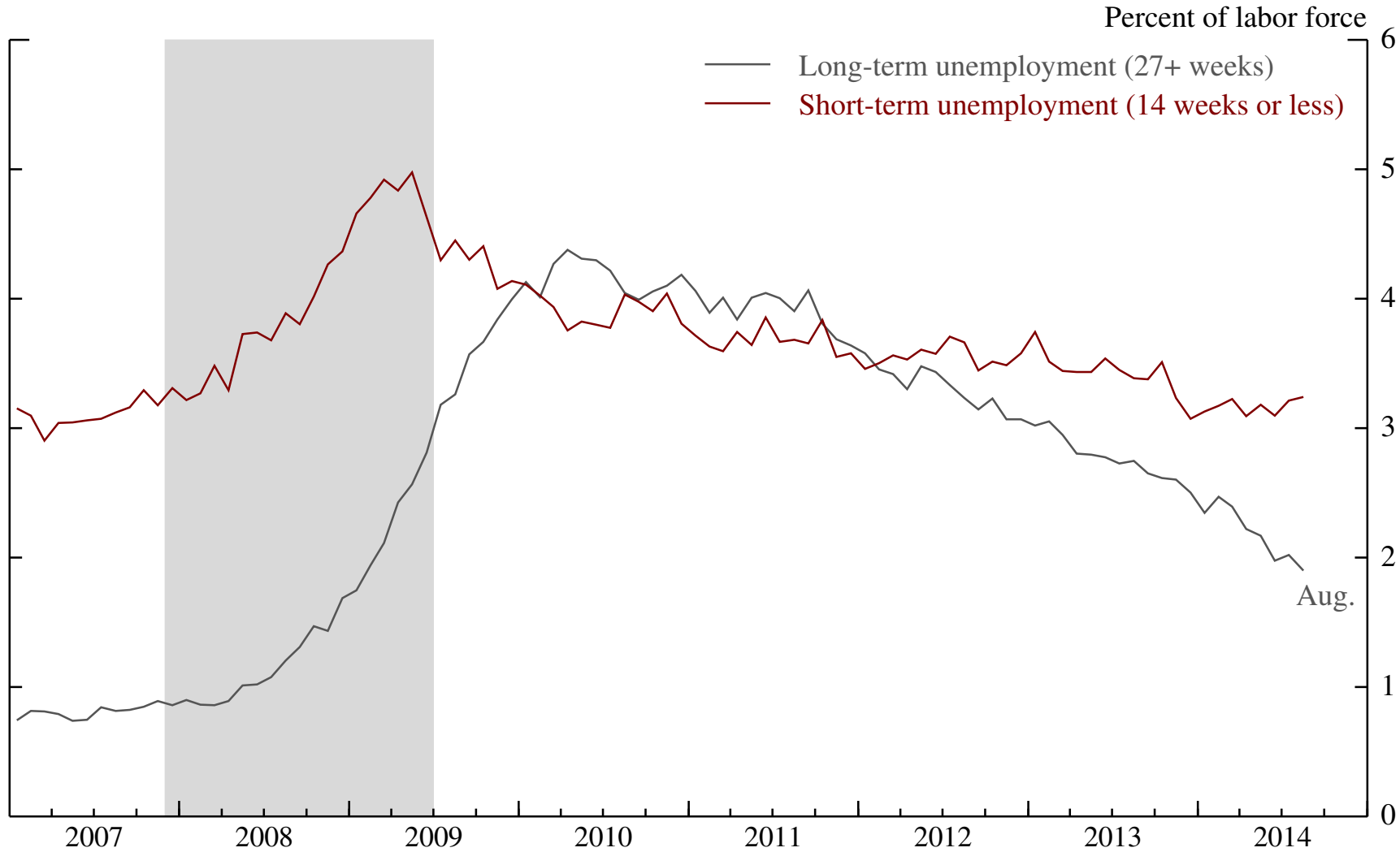
Measures of Quits

Percent of total employment

Percent of total employment



Duration of Unemployment

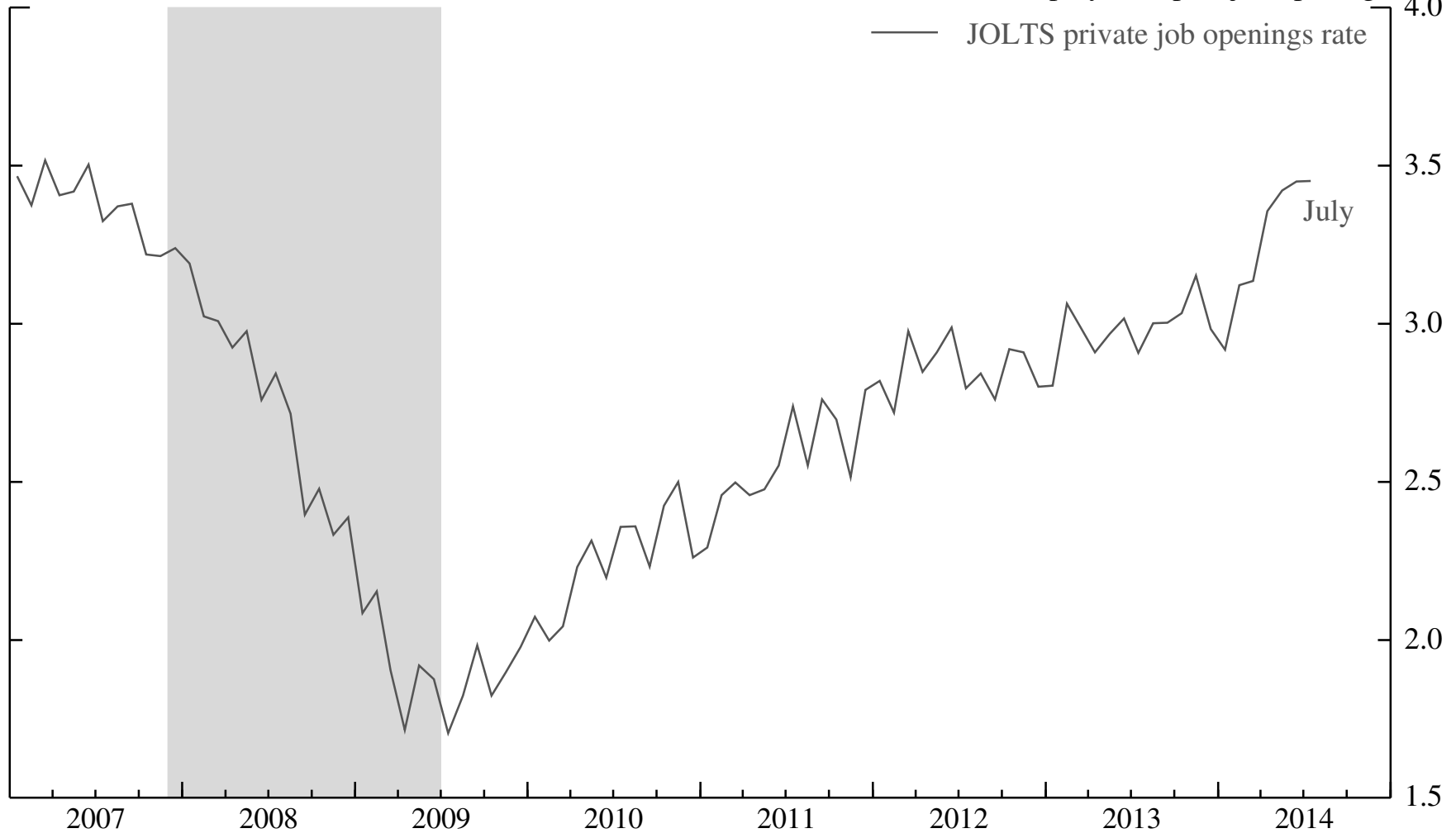


Aug.

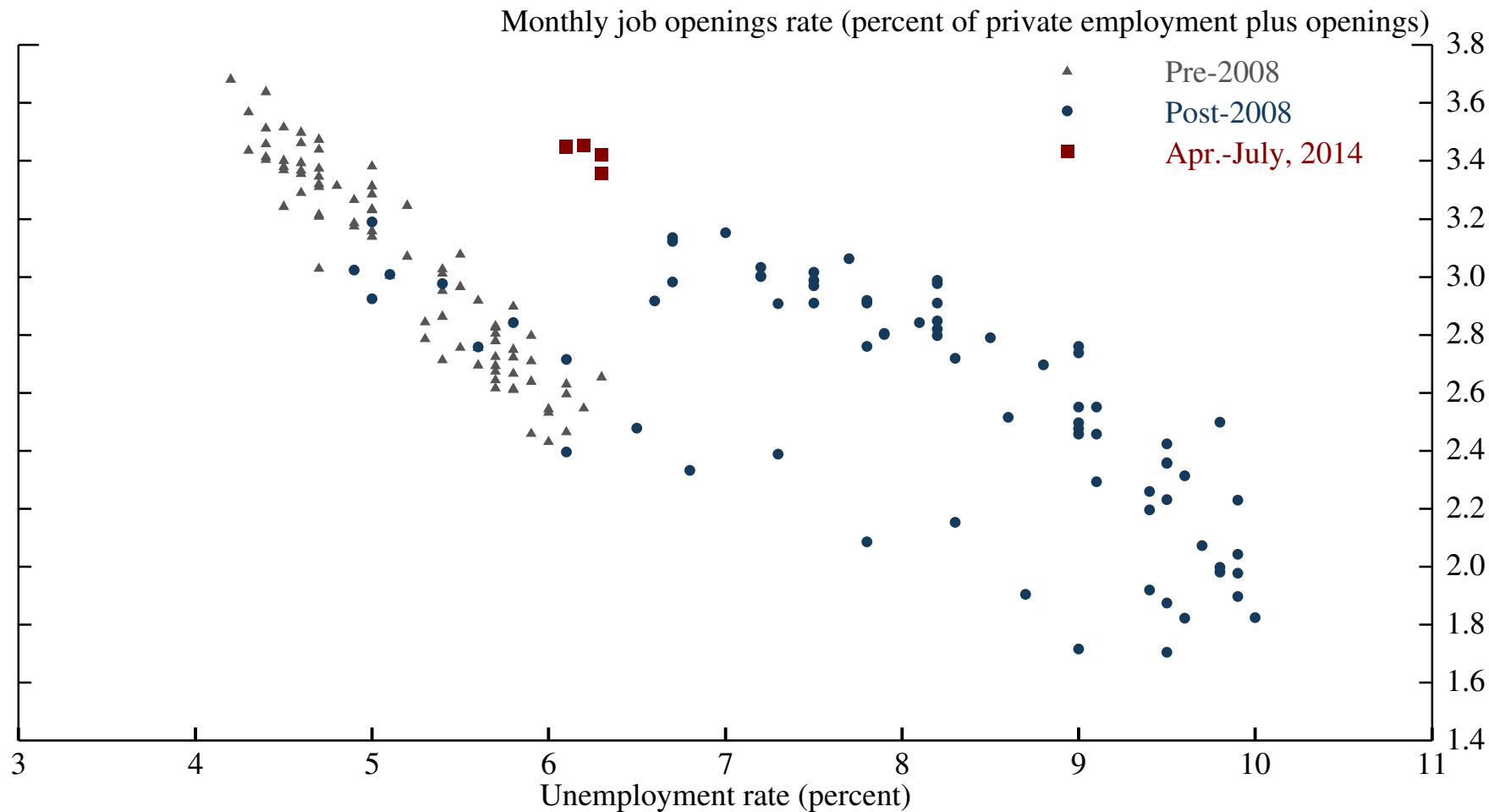
Job Vacancies

Percent of employment plus job openings

— JOLTS private job openings rate

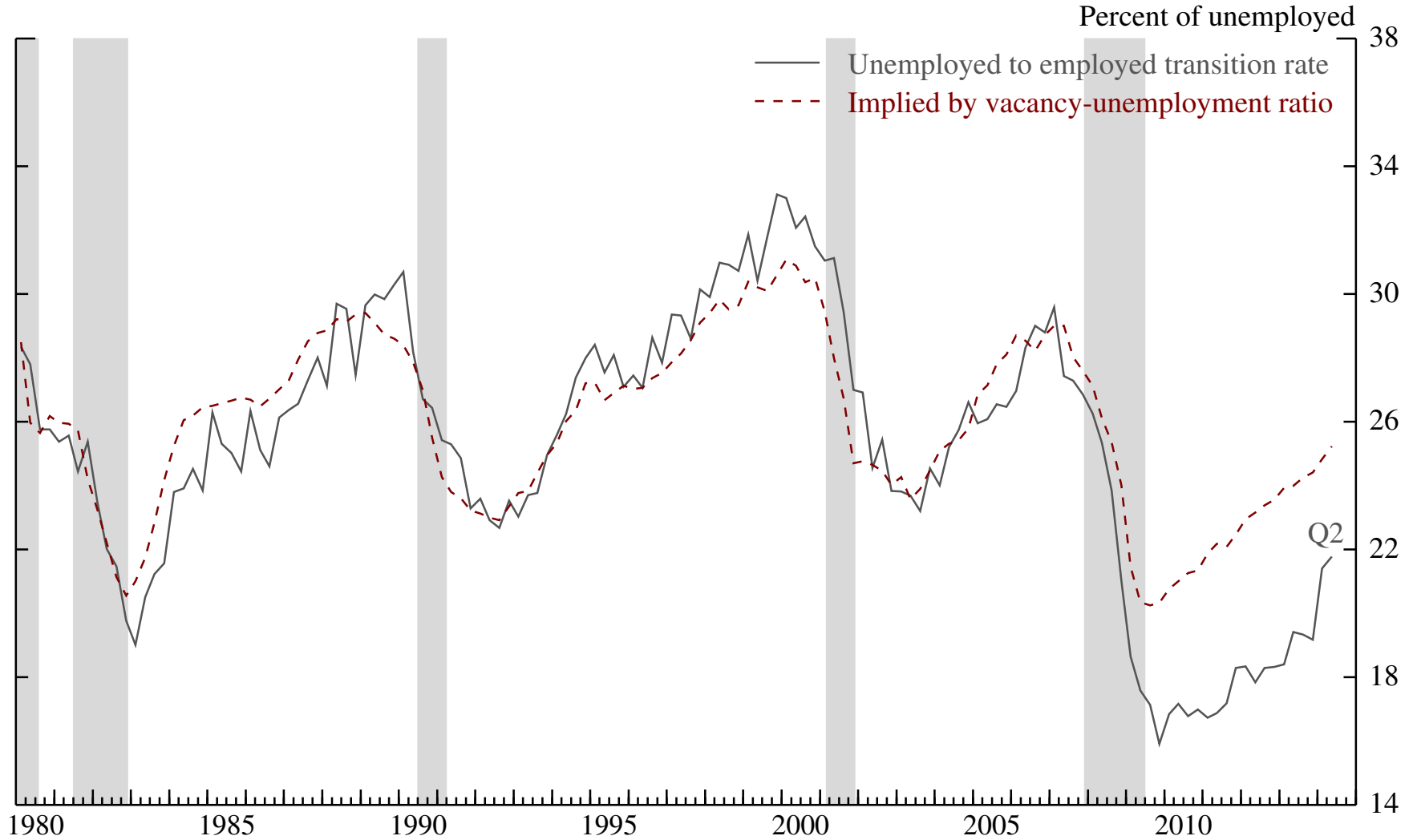


Beveridge Curve

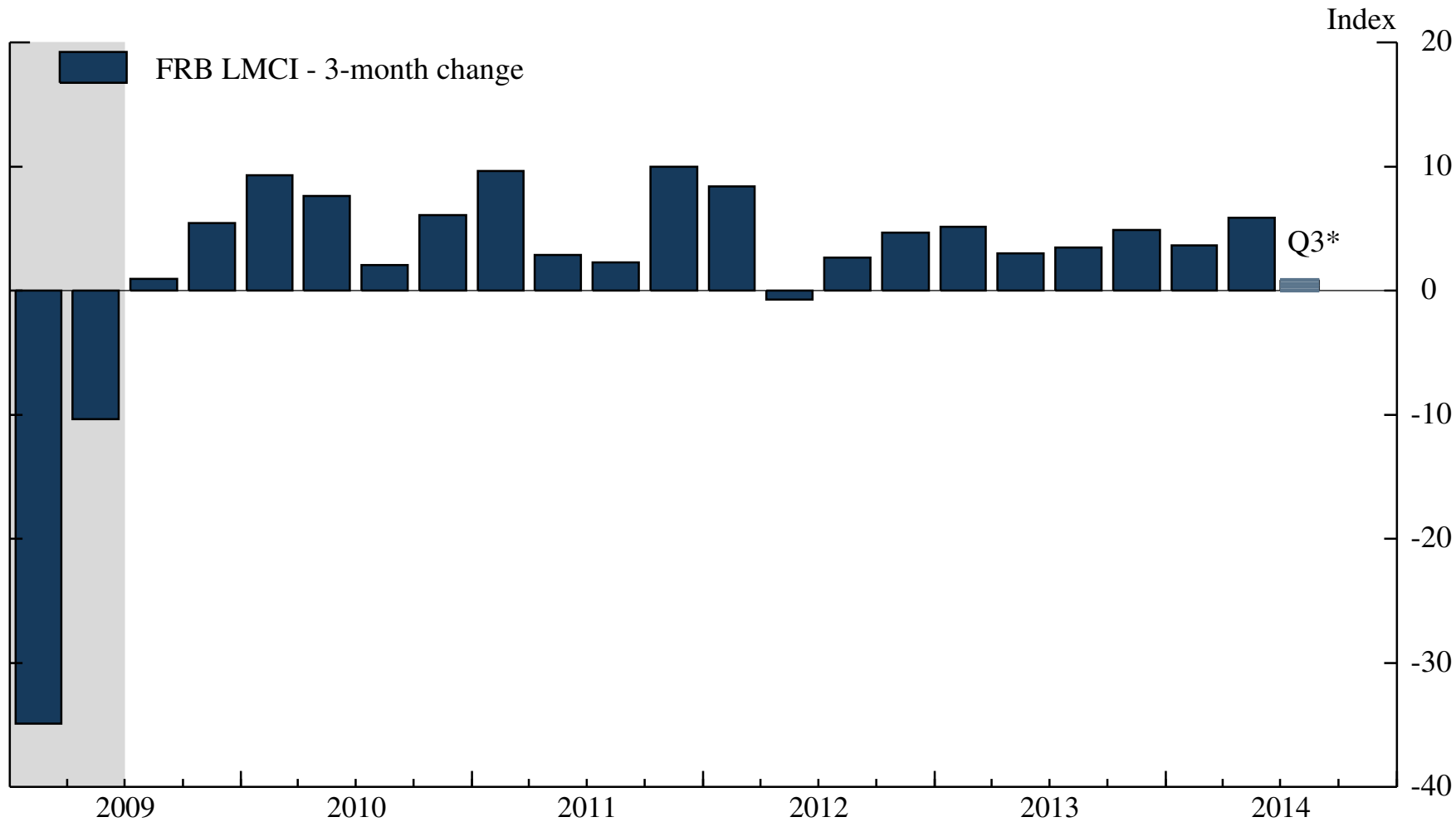


Source: Bureau of Labor Statistics.
Each dot represents a monthly observation.

Labor Market Matching Efficiency

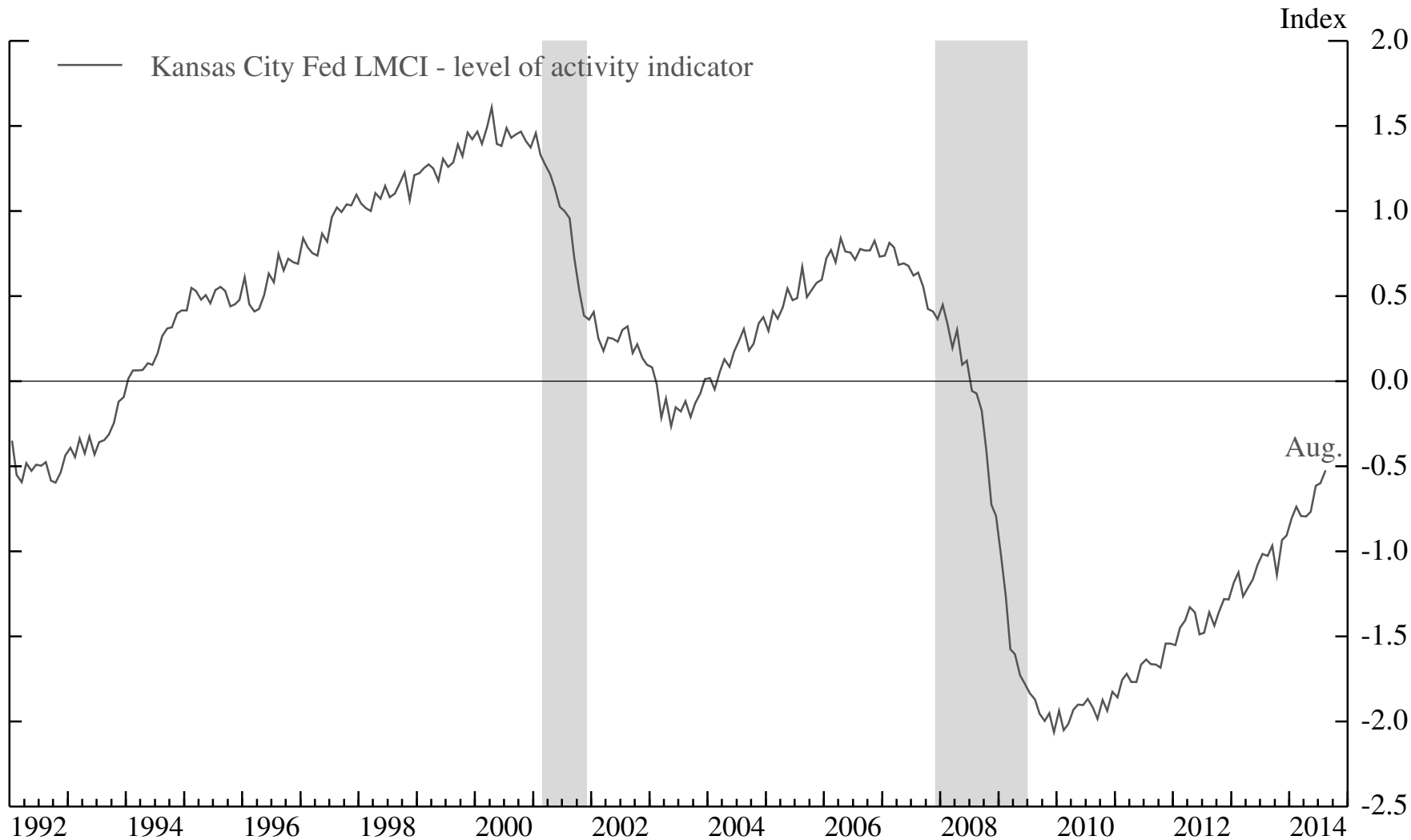


Labor Market Conditions Index

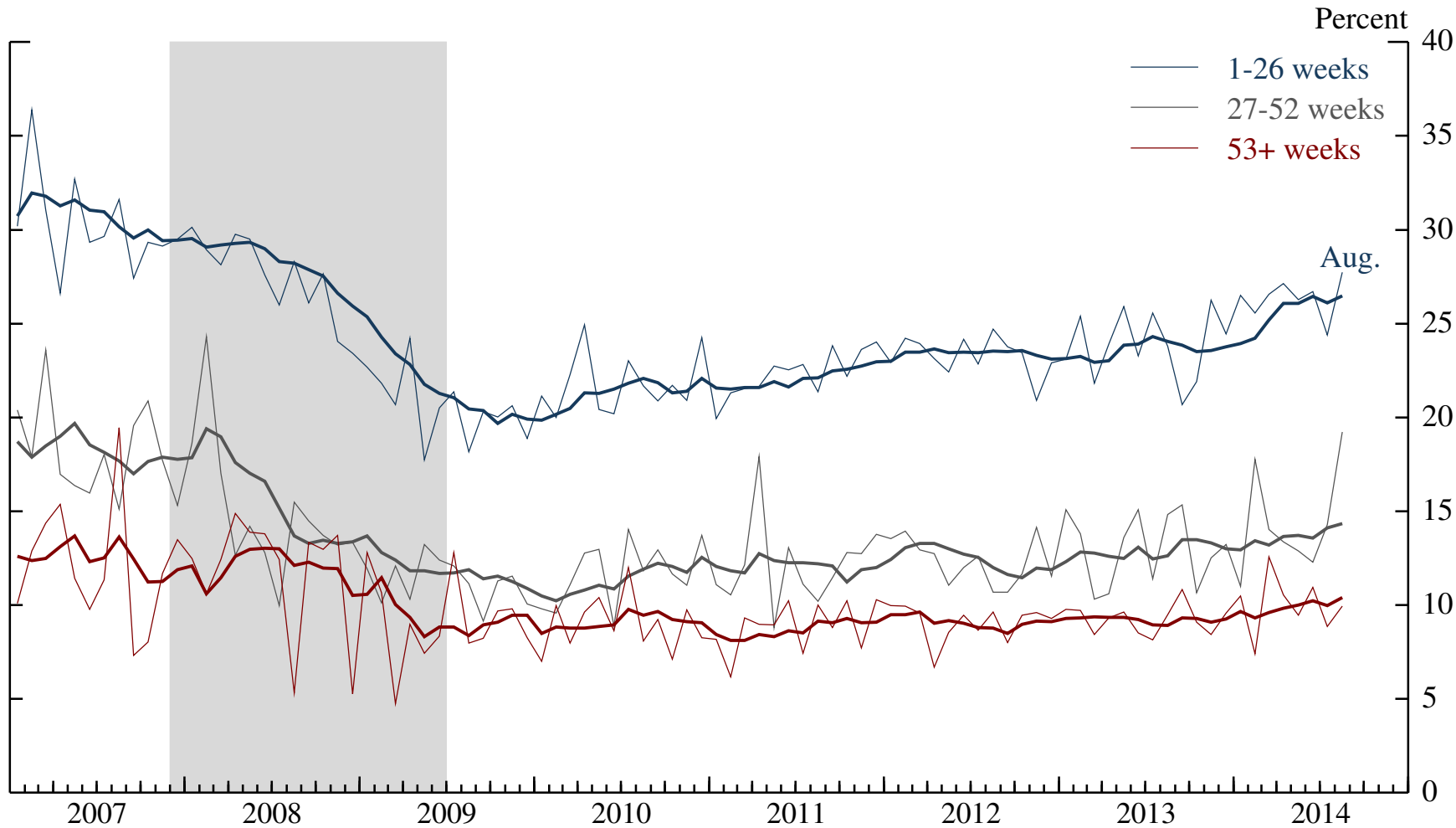


*Average for July and August.

Labor Market Conditions Index

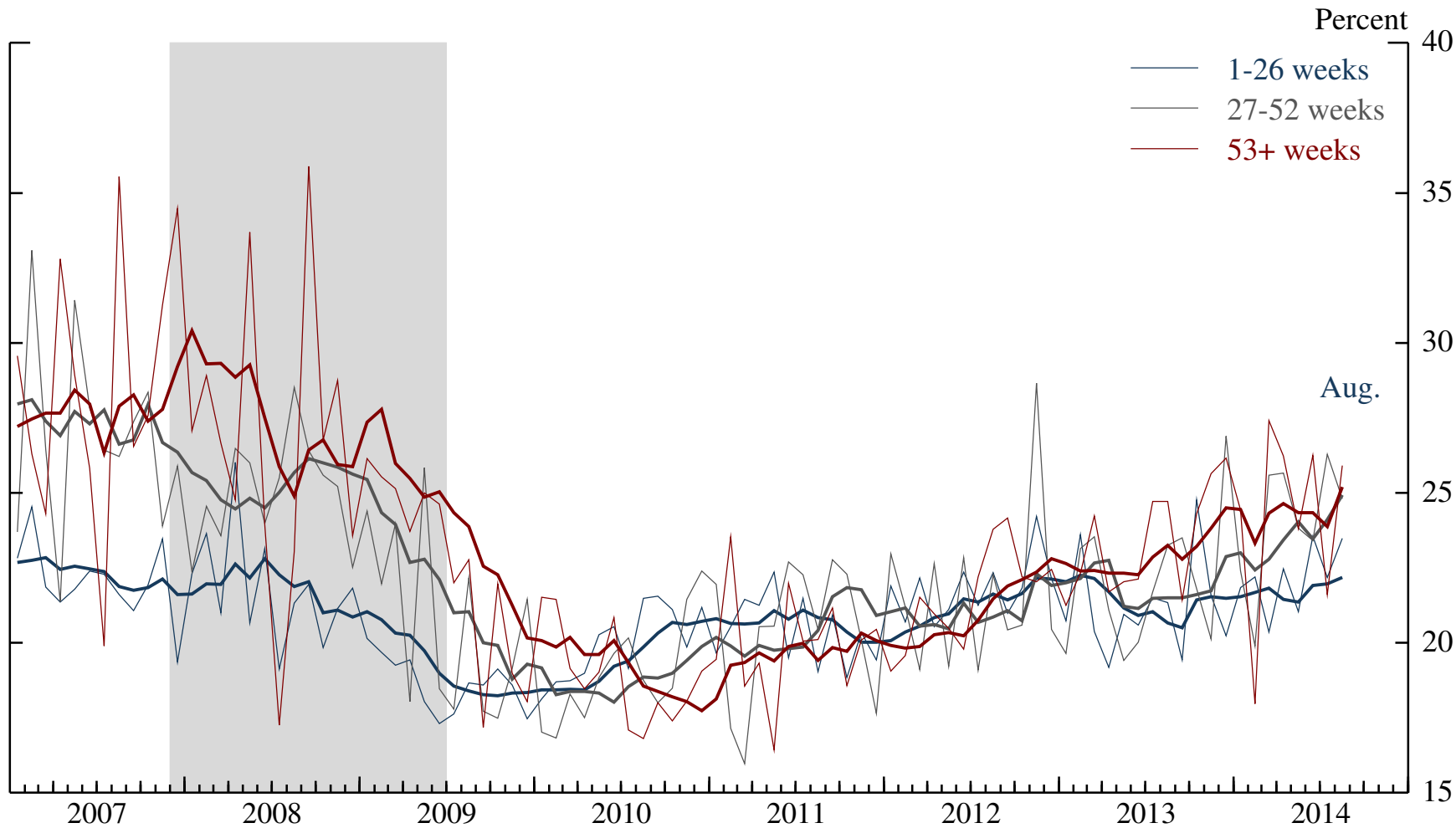


UE Transition Rate, by Unemployment Duration



Notes: Thick lines are 6-month moving averages of seasonally adjusted monthly data.

UN Transition Rate, by Unemployment Duration



Notes: Thick lines are 6-month moving averages of seasonally adjusted monthly data.