

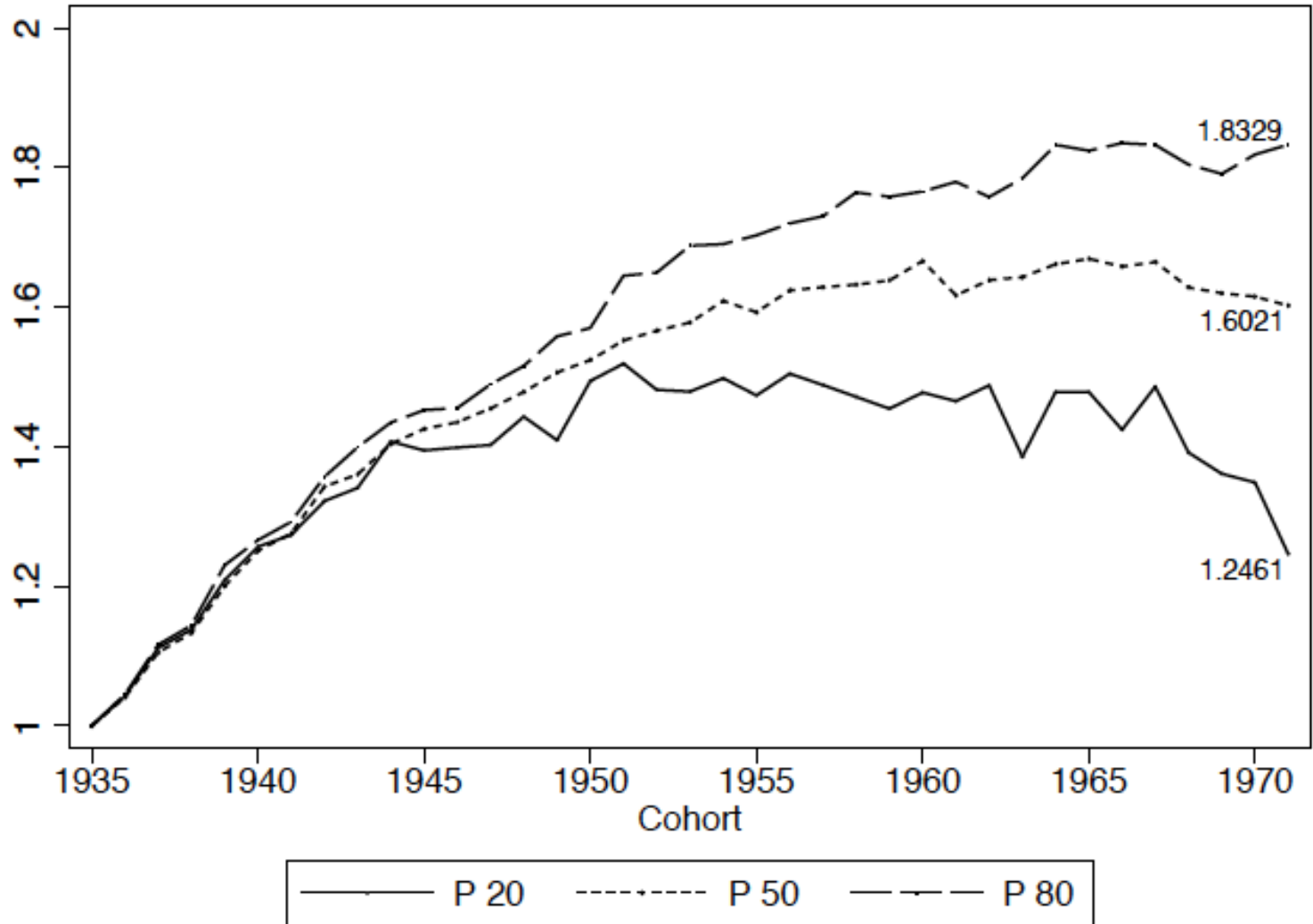
“Lifetime” earnings inequality

Germany and the United States

Jeromin Zettelmeyer, Peterson Institute for International Economics

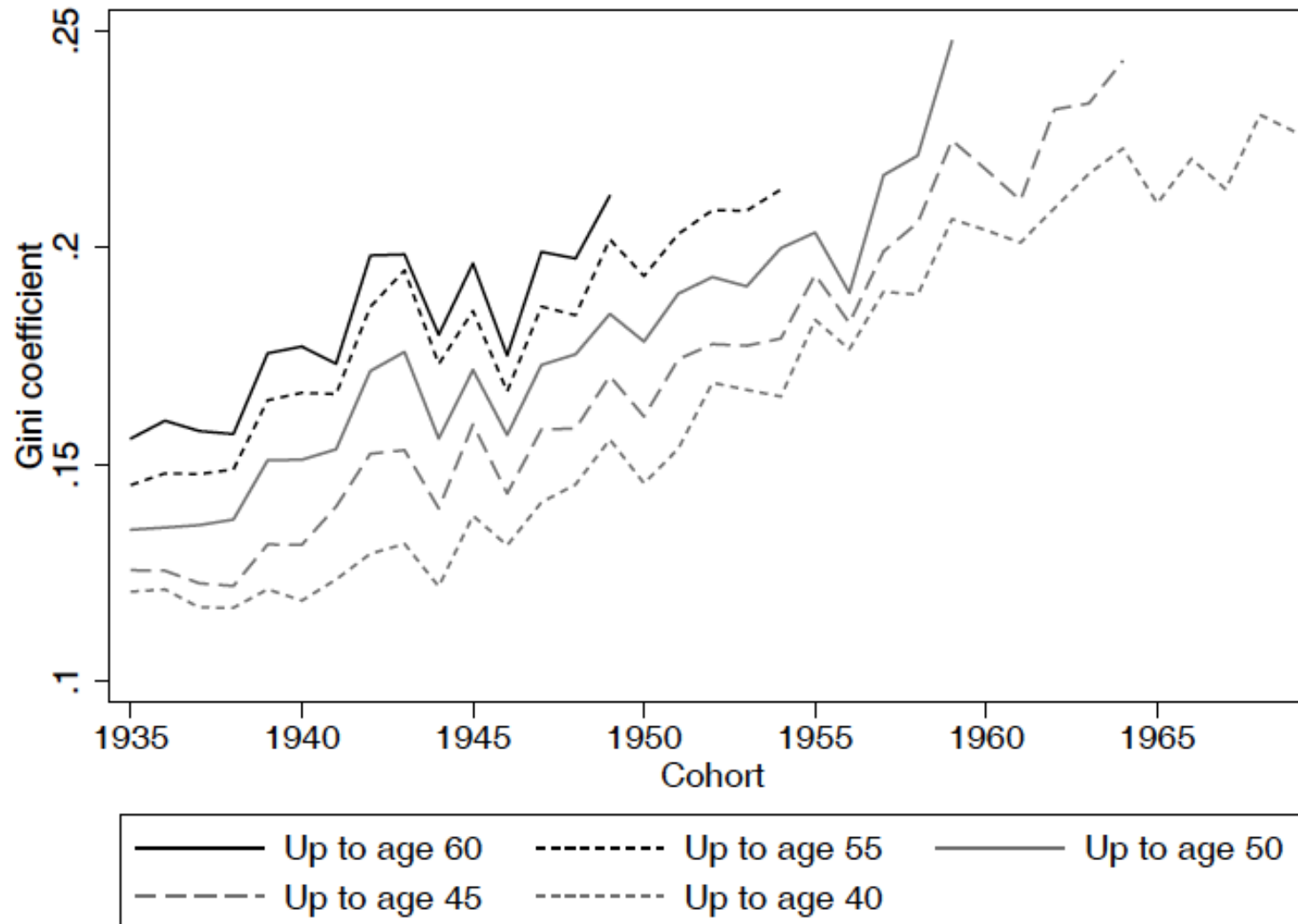
November 17, 2016

Distribution of lifetime earnings up to age 40, by birth cohort (West German males born between 1935 and 1972)



Source:
Corneo (2015) based on Boenke et al (2015), Journal of Labor Economics

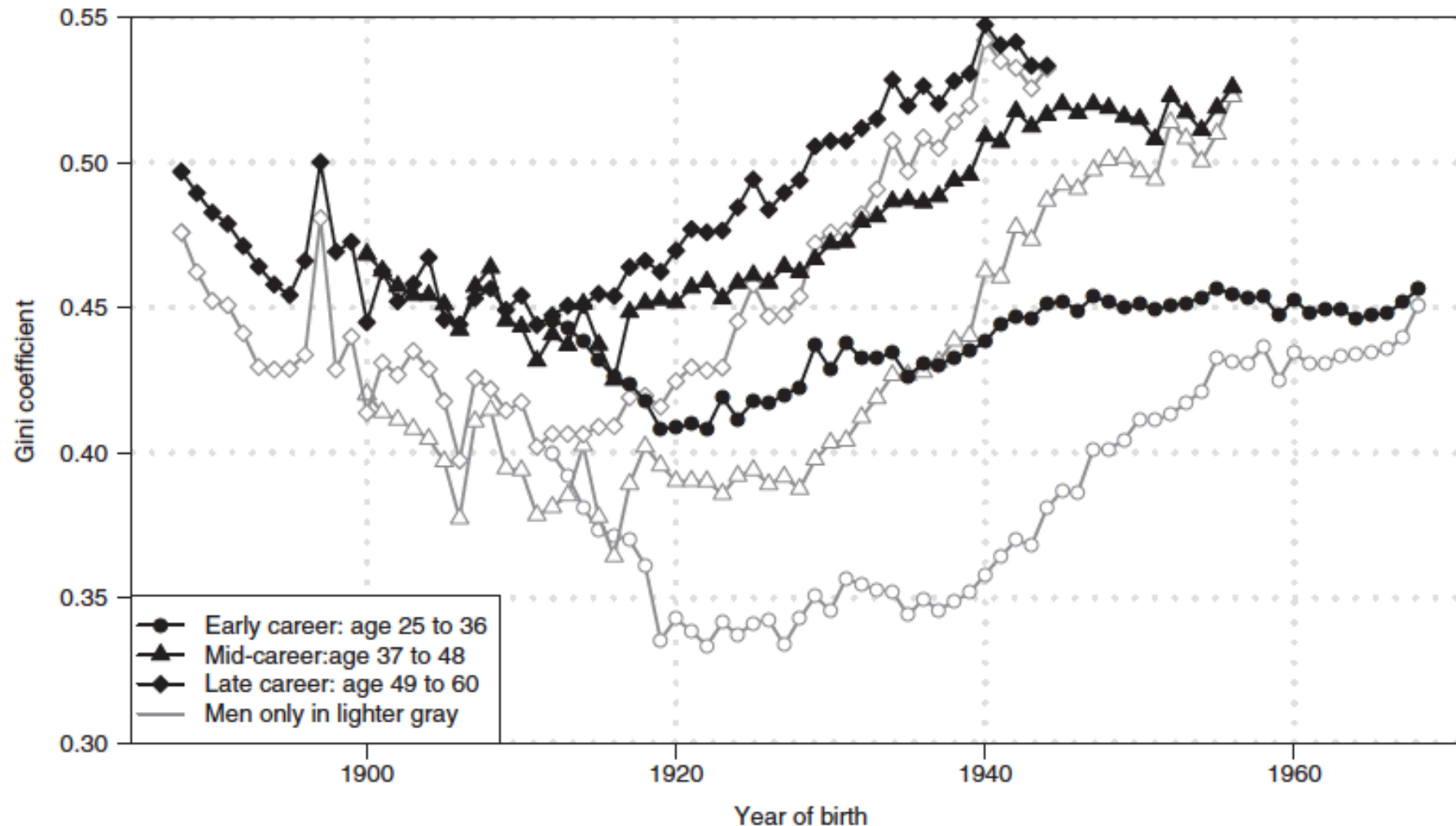
Gini coefficient of lifetime earnings up to age X, by birth cohort (West German males born between 1935 and 1972)



Source:

Boenke et al (2015),
Journal of Labor
Economics

Gini coefficient of earnings over three 12-year periods of working life, by birth cohort (US employees born between 1888 and 1968)



Source: Kopczuk et al (2010), Quarterly Journal of Economics